

# November Block of the Month - 2011

## Materials:

1 - 10" square background fabric

3 - different fabrics for feathers

1 - brown piece for body

1 - light brown piece for head

1 - red snippet for waddle

## Instructions:

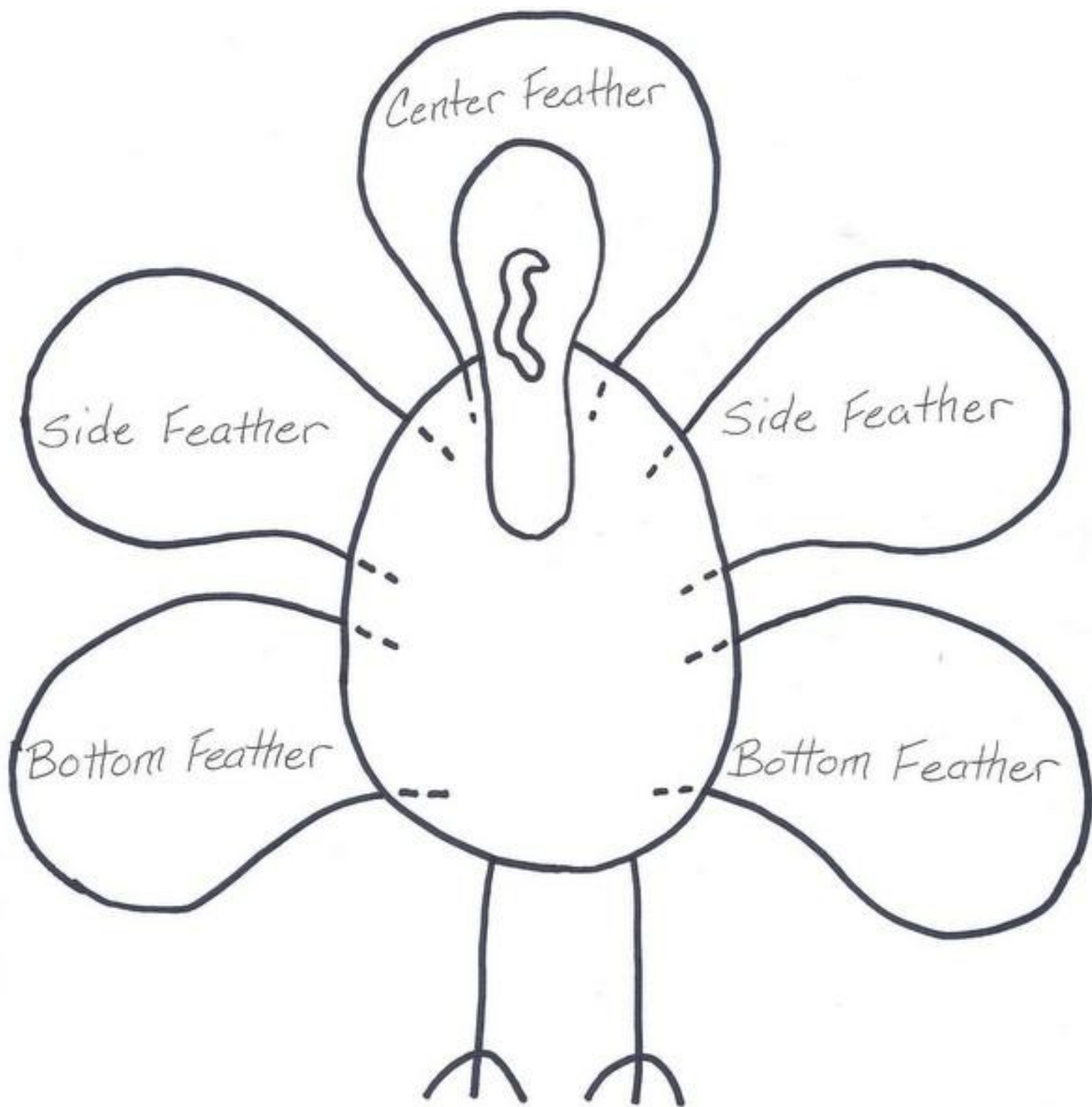
Trace pattern pieces onto paper side of Heat n Bond lite or other iron on adhesive. Using manufacturer's instructions, iron traced pattern adhesive onto back side of corresponding fabrics as indicated on pattern.

Trim to pattern line. Remove paper.

Place pieces according to layout guide starting with feathers first, body next, head, then waddle. Using manufacturer's instructions, iron into place.

Using a satin zig-zag stitch, outline all pieces. Using the same stitch, draw legs onto the turkey.





LAYOUT GUIDE

Cut 1  
Center  
Feather

Cut 2  
Right Sides  
Together  
Side Feather

Cut 1  
Body

Cut 2  
Right Sides  
Together  
Bottom  
Feather

Cut 1  
Head

Cut 1  
waddle

PATTERN PIECES